

**ADDRESS**

PO Box 6965
Gold Coast Mail Centre
Qld 9726 Australia

ABN 54 126 490 855

PHONE

+61(07) 5592 1001

FAX

+61 (07) 5592 1011

EMAIL

info@coppermoly.com.au

WEBSITE

www.coppermoly.com.au

ASX Announcement

ASX Code: COY

17 June 2011

AMENDMENT TO PRESENTATION TO SHAREHOLDERS & INVESTORS

An amendment has been made to page 10 of the attached presentation released to ASX yesterday, to include mention of Clause 18 of The JORC Code in reference to 'Exploration Target'

A handwritten signature in dark ink, appearing to read "M Gannon", is positioned above the printed name and title of the signatory.

Maurice Gannon
EXECUTIVE DIRECTOR

For further information please contact Peter Swiridiuk on (07) 5592 1001 or visit www.coppermoly.com.au.

Encl.



COPPERMOLY

Limited

“Major Copper-Gold Systems being Drill Tested.”

Gold Coast Resources Showcase
Investor Presentation - June 2011



COPPERMOLY
Limited

Disclaimer

This document is not a disclosure document nor does it constitute the provision of financial product advice. No representation or warranty is made as to the accuracy, completeness or reliability of the information.

The information is provided expressly on the basis that recipients will carry out their own independent inquiries into the matters contained herein and make their own independent decisions about the affairs, financial position or prospects of the Company which reserves the right to update, amend or supplement any information at any time in its absolute discretion.

The technical information provided by Barrick (PNG Exploration) Ltd, a wholly owned subsidiary of Barrick Gold Corporation has been interpreted by Coppermoly Ltd and does not necessarily reflect views by Barrick.

Competency Statement

The information in this presentation that relates to Exploration Results is based on information compiled by Peter Swiridiuk, who is a Member of the Australian Institute of Geoscientists.

Peter Swiridiuk is a consultant to Coppermoly Ltd and is employed by Aimex Geophysics. Peter Swiridiuk has sufficient experience which is relevant to the style of mineralisation and type of deposit under consideration and to the activity which he is undertaking to qualify as a Competent Person as defined in the 2004 Edition of the 'Australasian Code for Reporting of Exploration Results, Mineral Resources and Ore Reserves'. Peter Swiridiuk consents to the inclusion in the report of the matters based on his information in the form and context in which it appears.

Please consult www.coppermoly.com.au for more detailed information.



COPPERMOLY
Limited

Highlights

- In an agreement with Barrick (PNG Exploration) Ltd, Barrick have spent over half of A\$20M required to attain a 72% interest in three tenements.
- Drilling and Exploration has defined at least two major Copper-Molybdenum-Gold systems currently undergoing additional drilling.
- **Nakru-1:** Drillhole intersection of **213.75m grading 0.92% copper and 0.33 g/t gold.** Drilling testing mineralisation extents currently over 500m x 200m.
- **Simuku:** Inferred Mineral Resource of 200 million tonnes at 0.36% copper. Drilling to test higher grade copper zones at depth.
- Projects are located close to major infrastructure including roads, deep water port, airport and general amenities.
- Coppermoly has an additional two tenements under application and is actively looking for additional projects. New Britain Island has a strong interest and is well pegged.

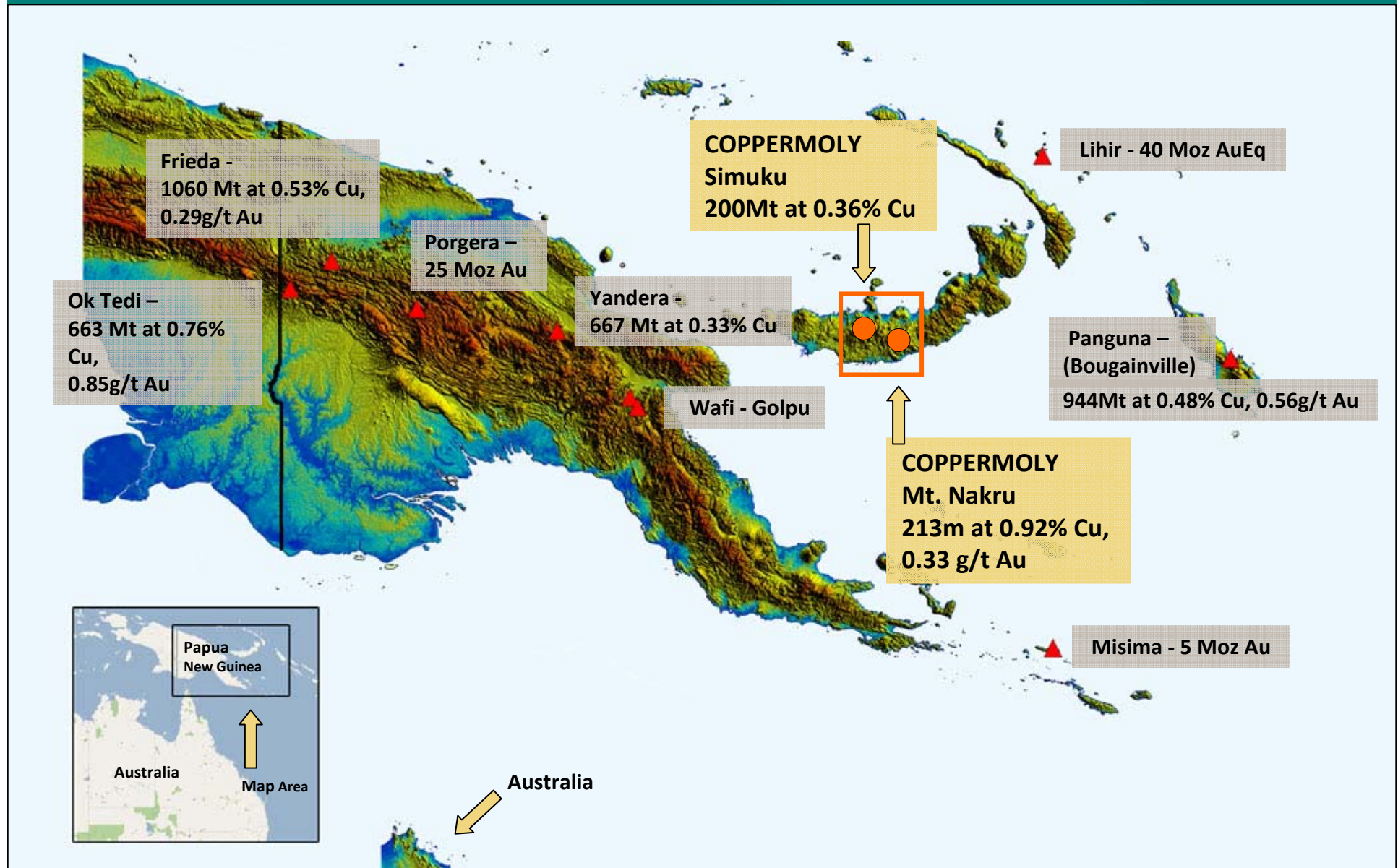


Company Overview (ASX:COY)

New Guinea Gold Corp.	15%
Vangold Resources Ltd	10%
National Nominees Ltd	5.7%
Barrick	4.5%
Current Shares on Issue	139 million
Total Listed Options (COYOA 7 cents)	23.6 million
Share Price	10 cents
Market Capitalisation	\$14 million
Cash at Bank	\$1.6 M
Top 20 Shareholders currently hold	56%



Mineralised Papua New Guinea



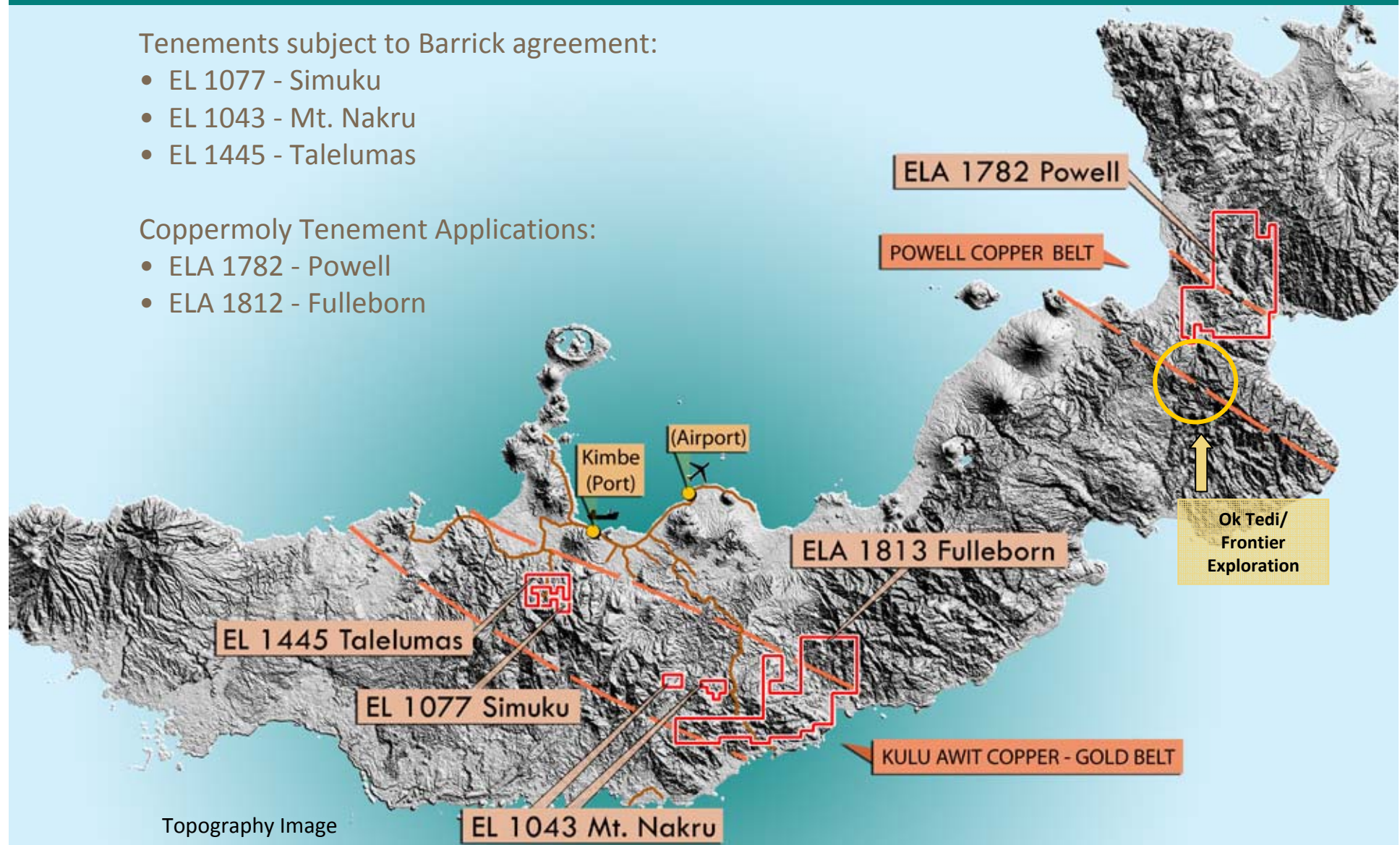
New Britain Island Copper-Gold Province

Tenements subject to Barrick agreement:

- EL 1077 - Simuku
- EL 1043 - Mt. Nakru
- EL 1445 - Talelumas

Coppermoly Tenement Applications:

- ELA 1782 - Powell
- ELA 1812 - Fulleborn



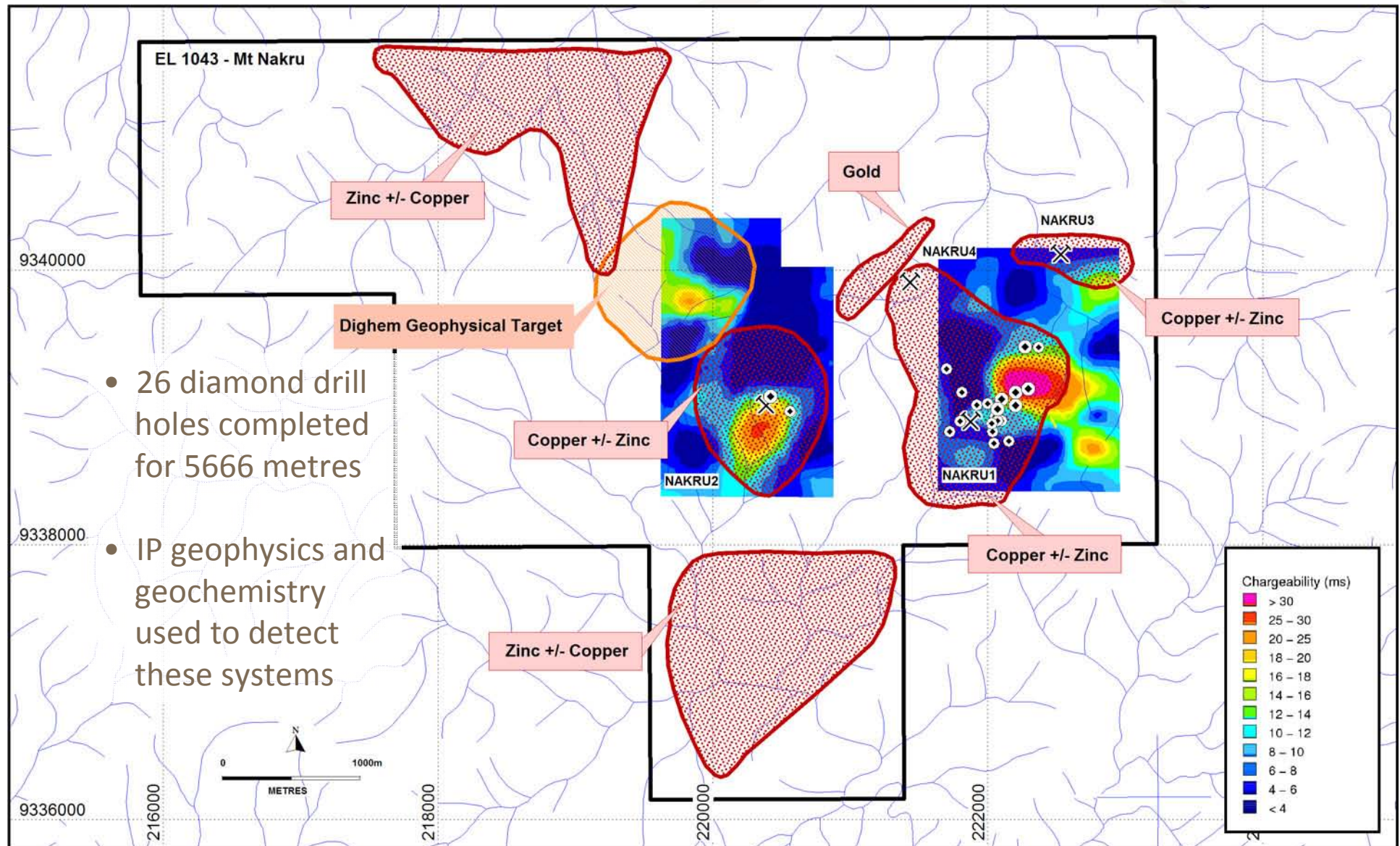
LOCATION

Excellent for Project Development

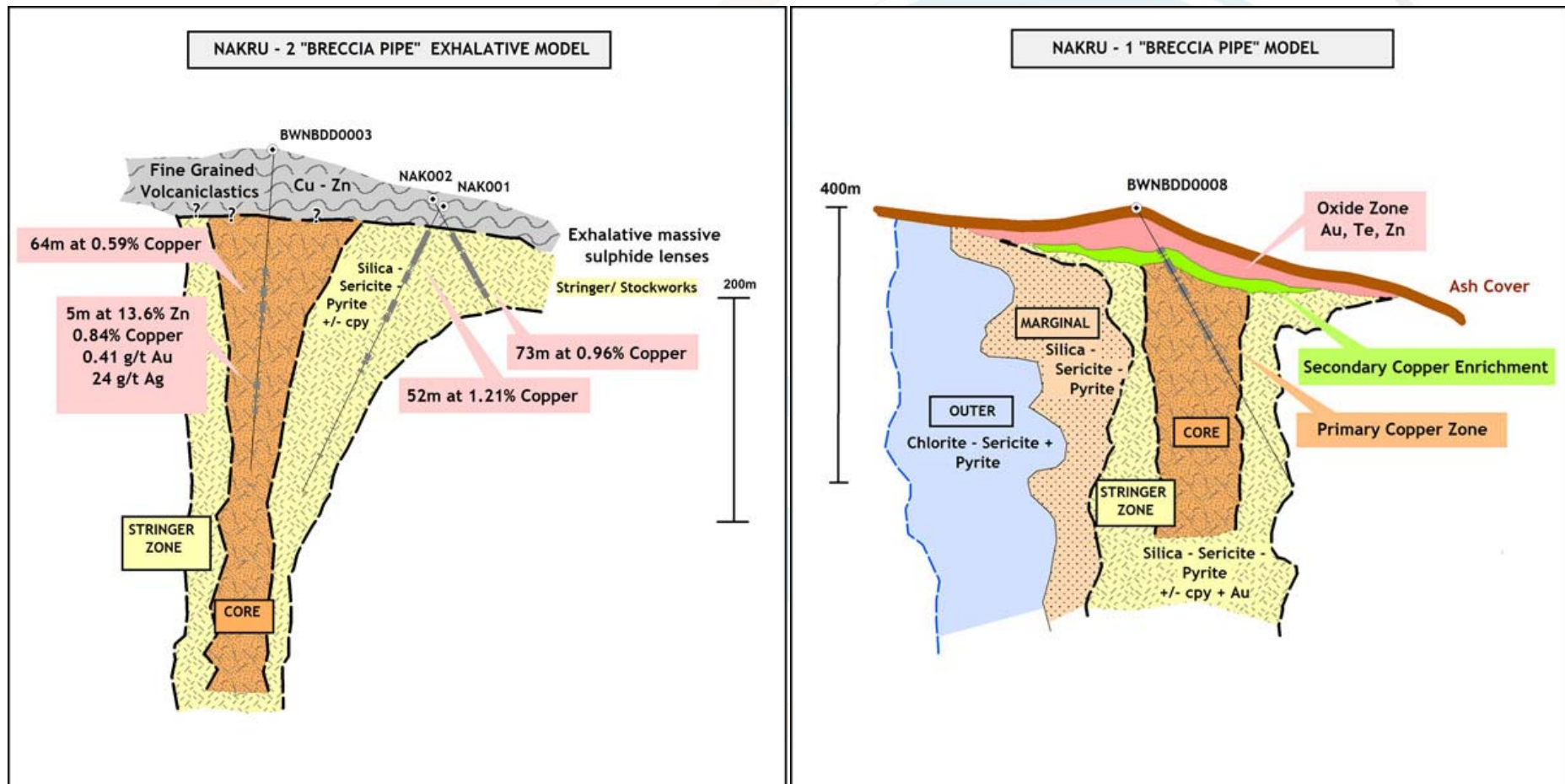
- Vehicle access to both projects (1 to 4 hour drive)
- Deep water port at provincial capital of Kimbe
- Local infrastructure and relatively easy logistics
- Topography not extreme (200m to 800m elevation)
- Landowners support exploration
- Large palm oil industry on the island has developed local infrastructure



Nakru Area showing Prospects



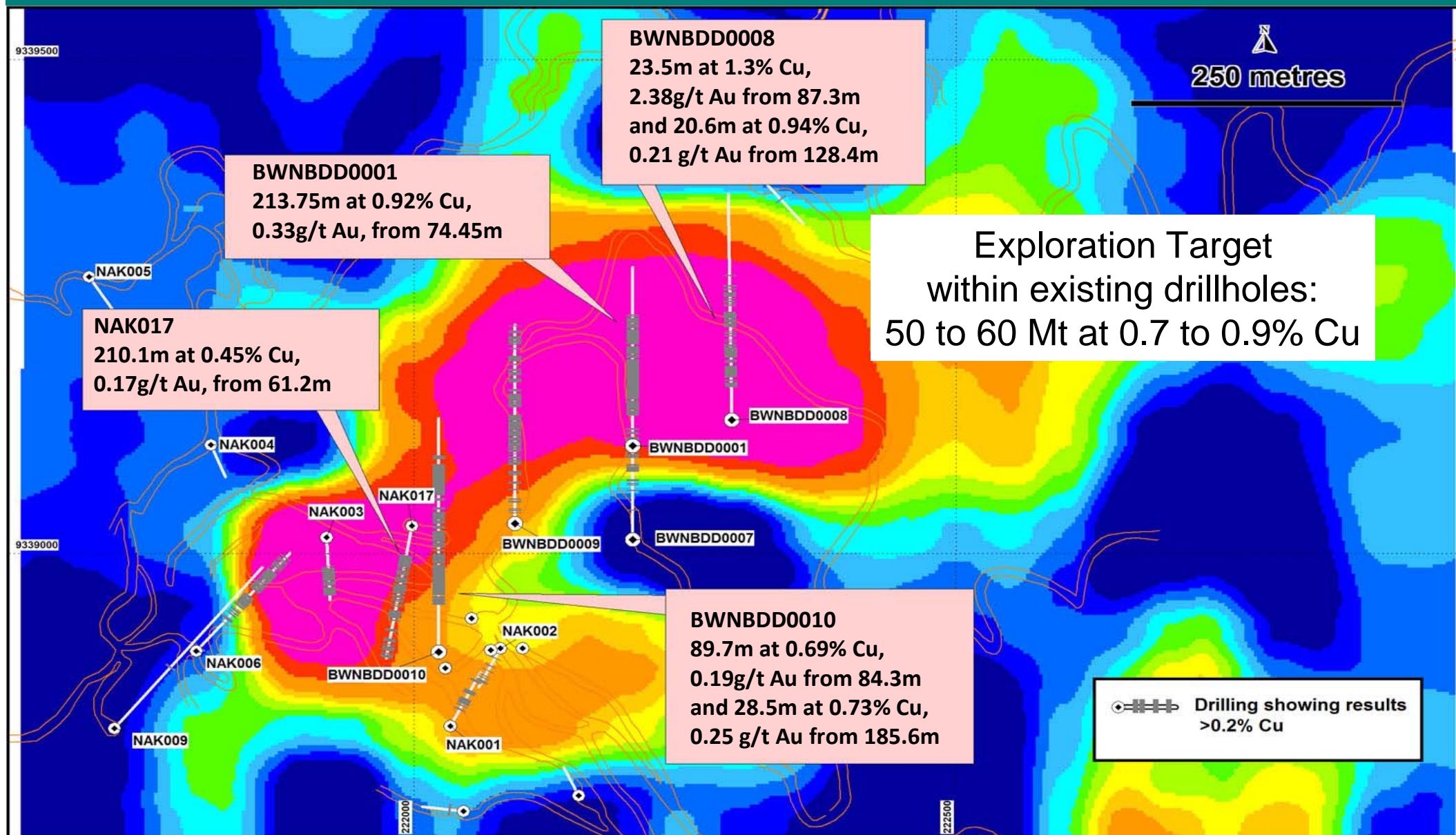
Nakru1 and 2 Copper - Gold - Zinc Breccia Model



COPPERMOLY
Limited

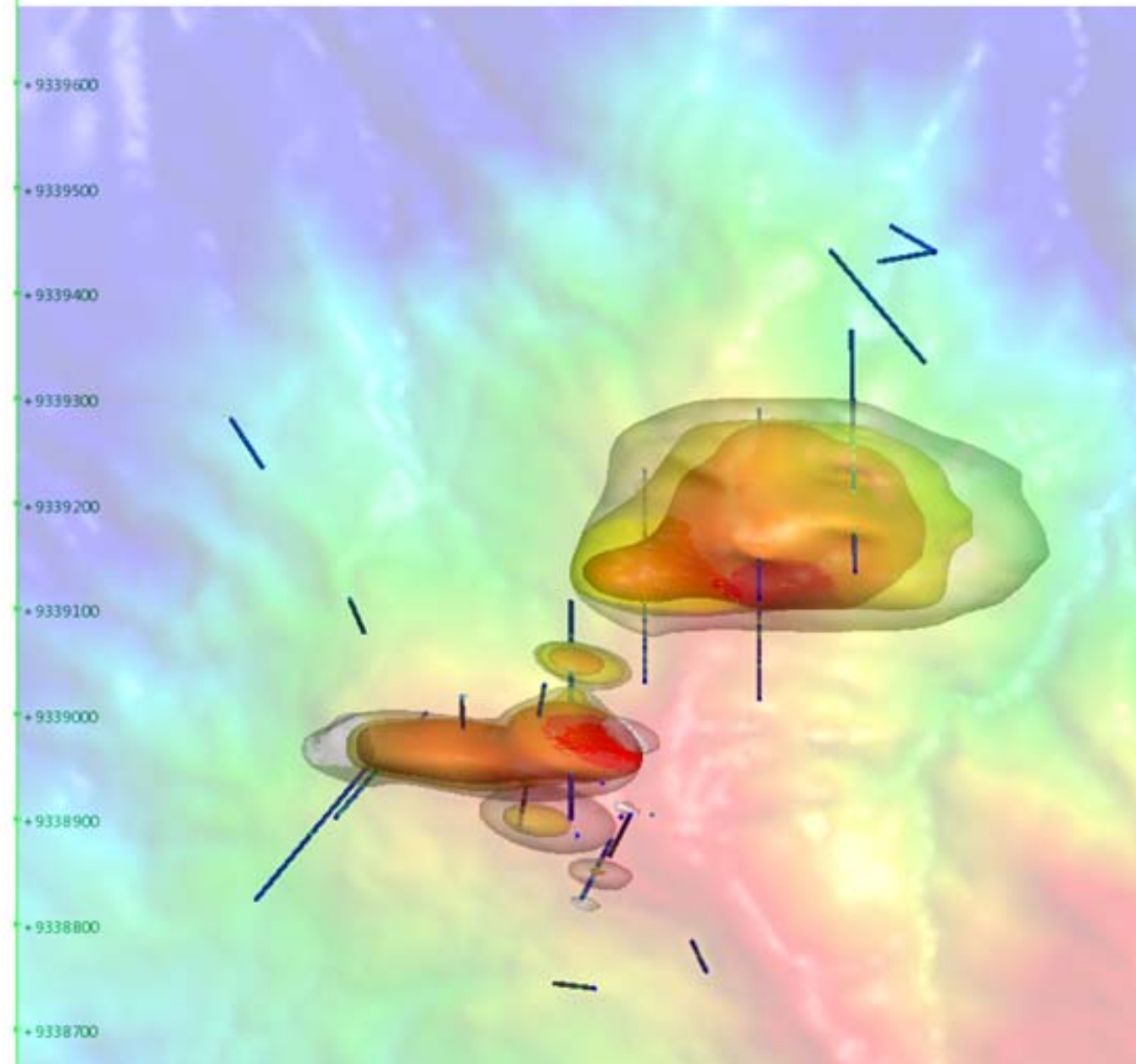
Nakru 1 – Copper Gold System

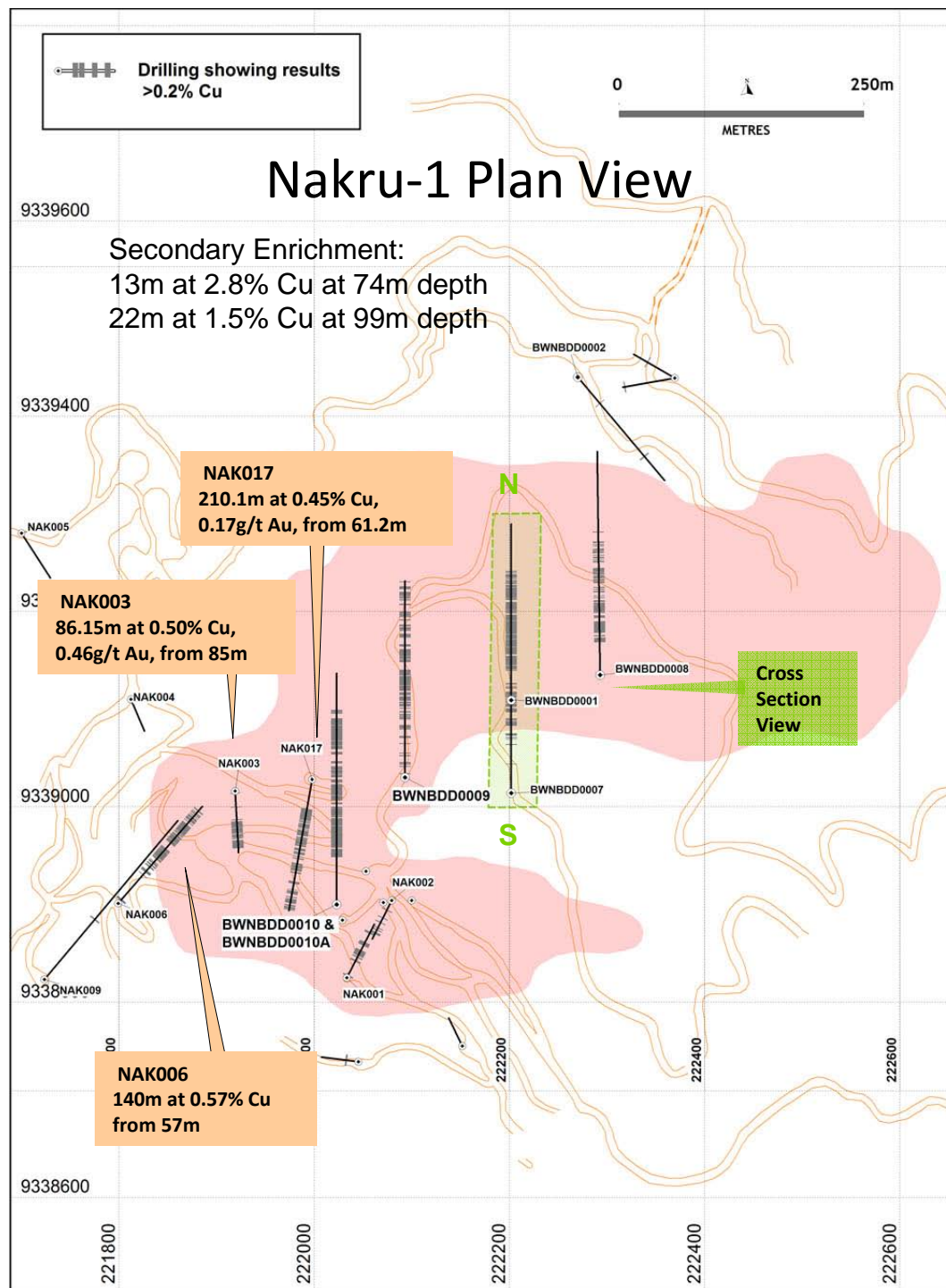
Barrick to drill Test for Tonnage Potential



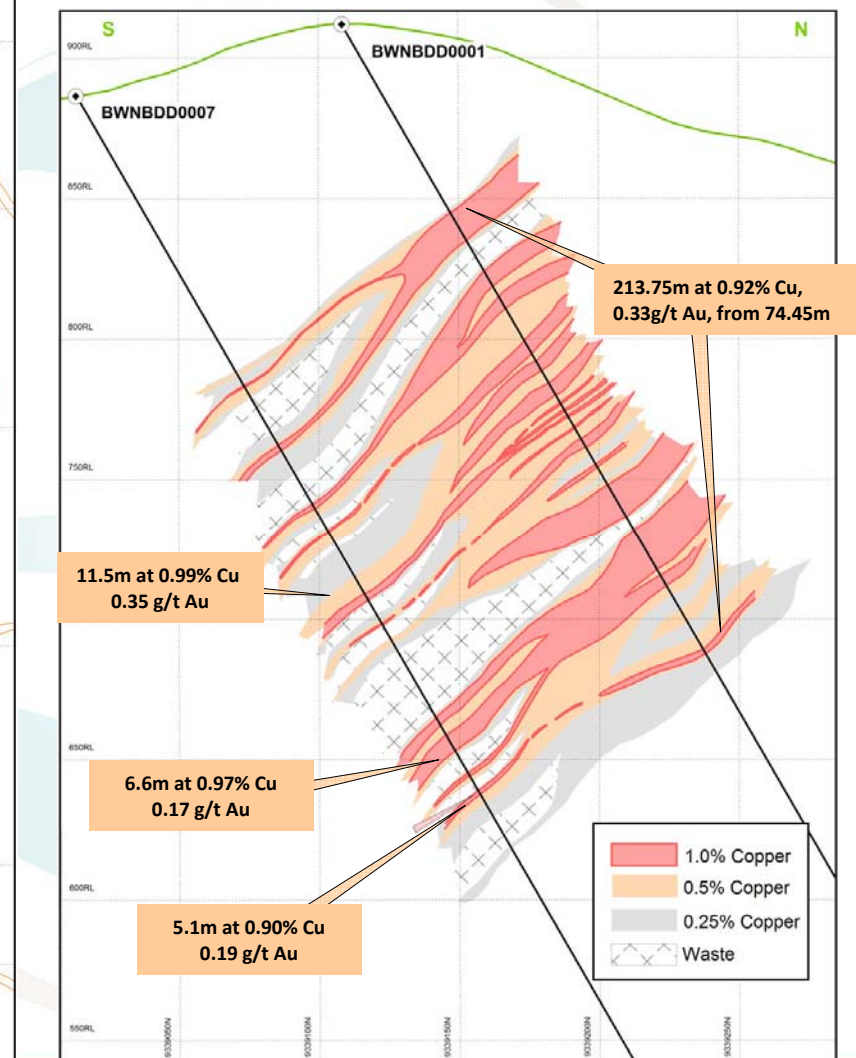
In accordance with Clause 18 of The JORC Code the reference to 'Exploration Target' in terms of target size and type should not be taken as an estimate of Mineral Resources or Ore Reserves. The statement referring to quantity and grade of the exploration target is based upon exploration results to-date including extensive drilling which has intersected the mineralization. The potential quantity and grade is conceptual in nature. There has been insufficient exploration to define a Mineral Resource and it is uncertain if further exploration will result in the definition of a Mineral Resource.

Nakru 1 – Mineralisation Model



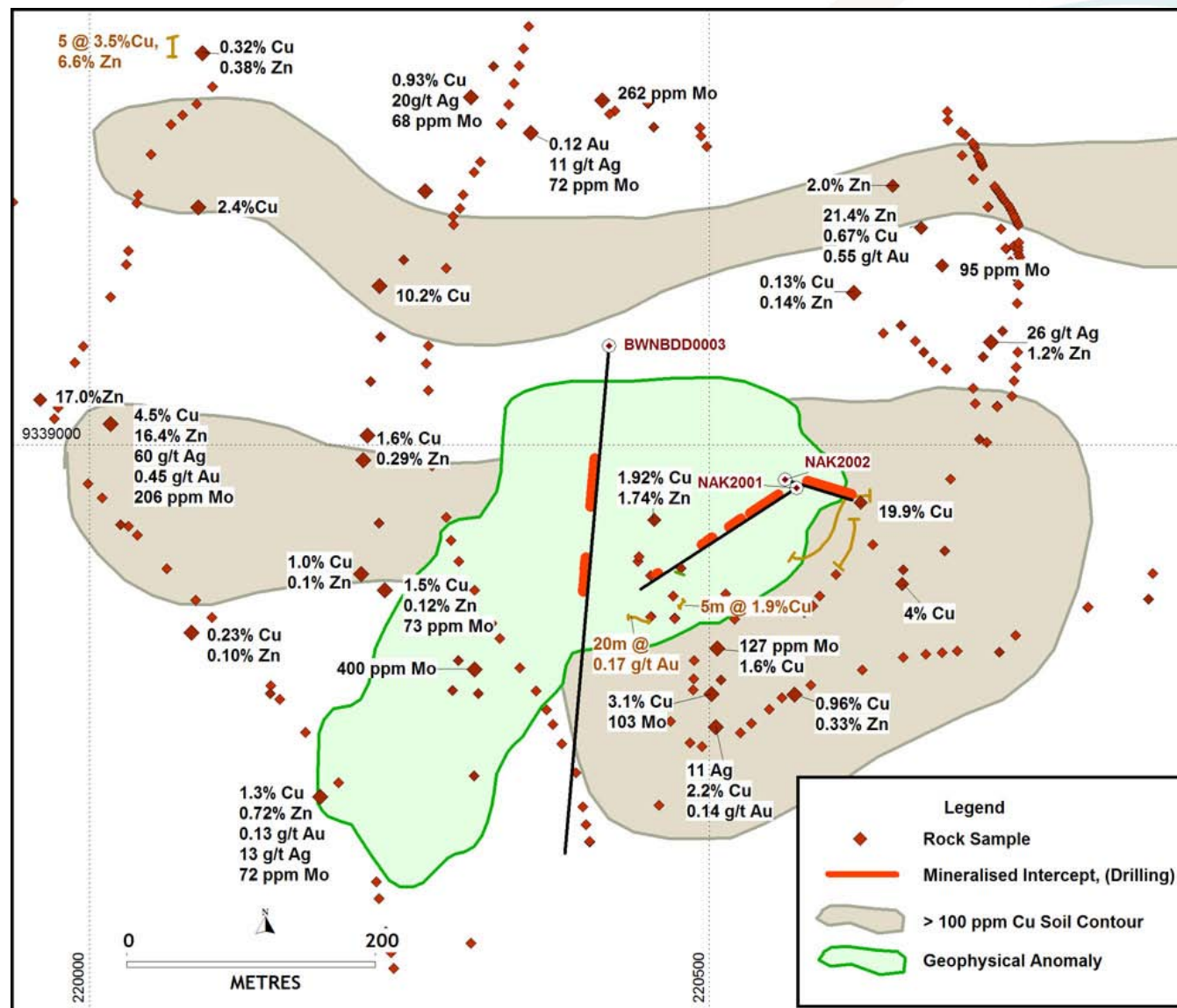


Nakru-1 Cross Section



COPPERMOLY
Limited

Nakru 2 - Sulphide Copper System

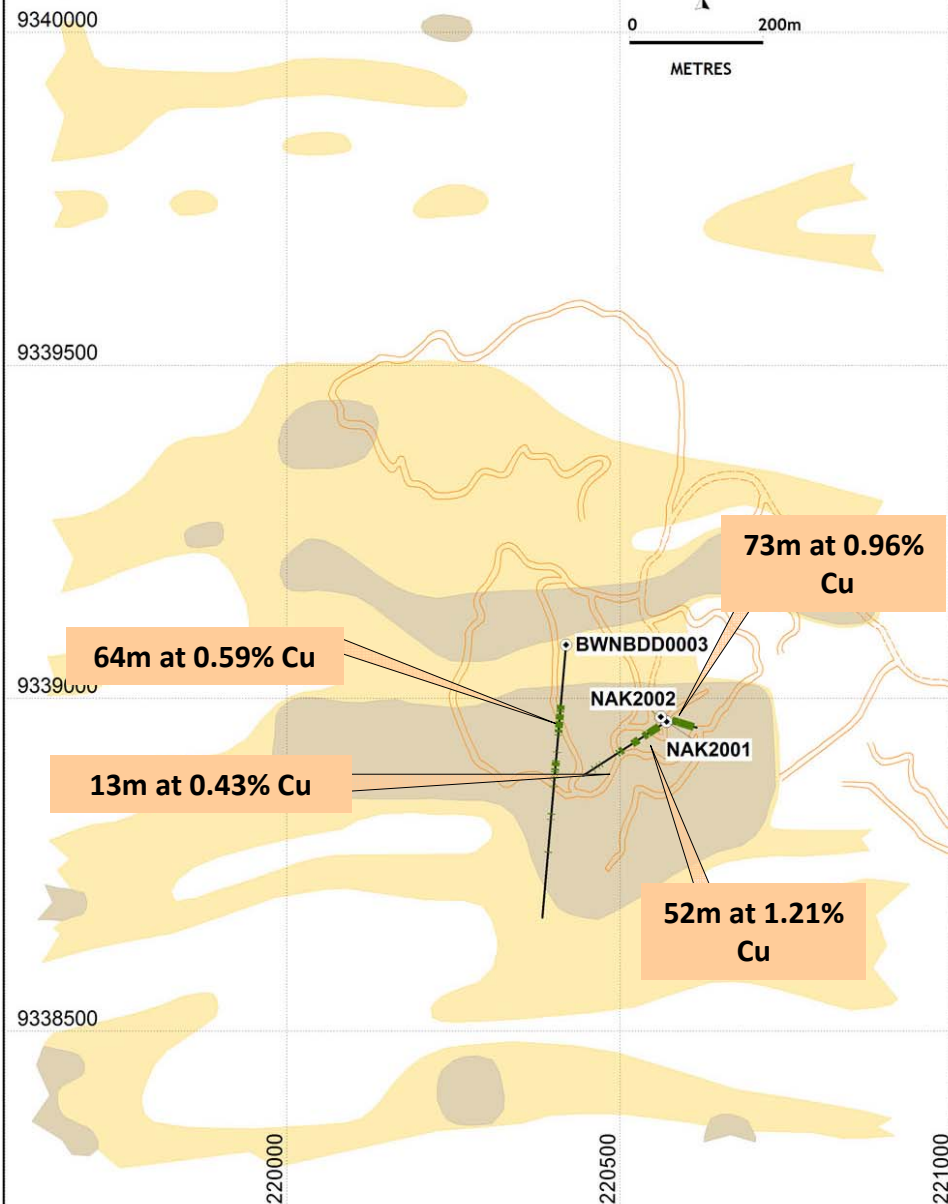
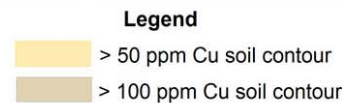


- Breccia hosted copper system with 800m diameter envelope of mineralisation
- Massive Sulphide copper lens: 6.8m at 3.8% Cu at 30m Depth
- Drill tested with one deep hole by Barrick: 64m at 0.59% Cu at 141m depth. 4.9m at 13.6% Zn, 24.03 g/t Ag, 0.41 g/t Au, 0.85% Cu

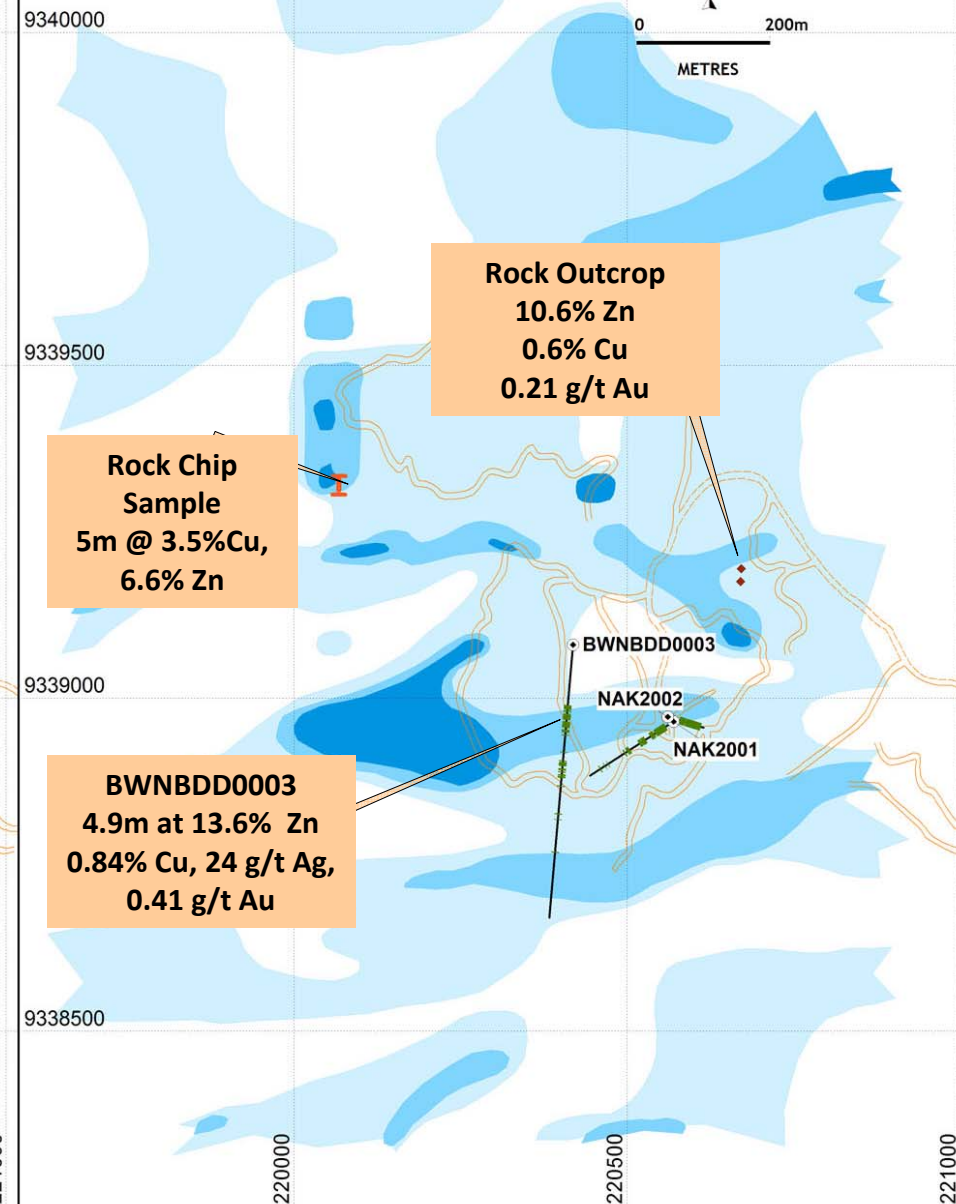
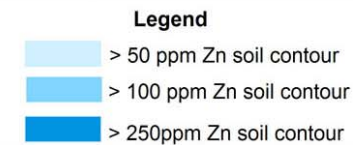


COPPERMOLY
Limited

Copper Soil Geochemistry

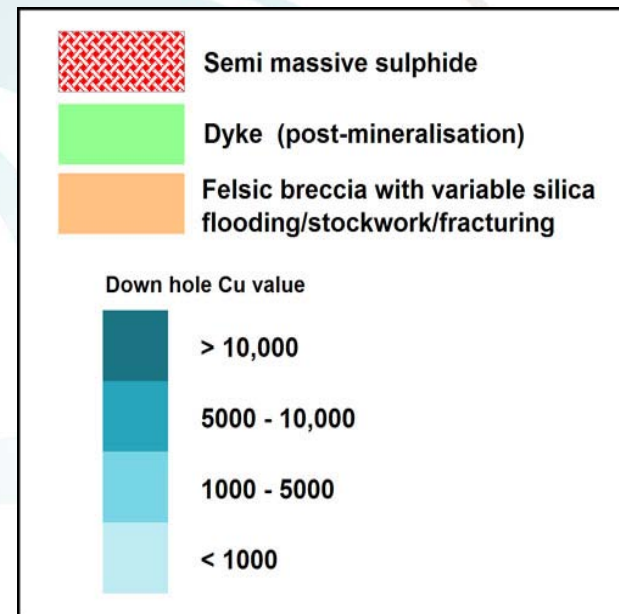
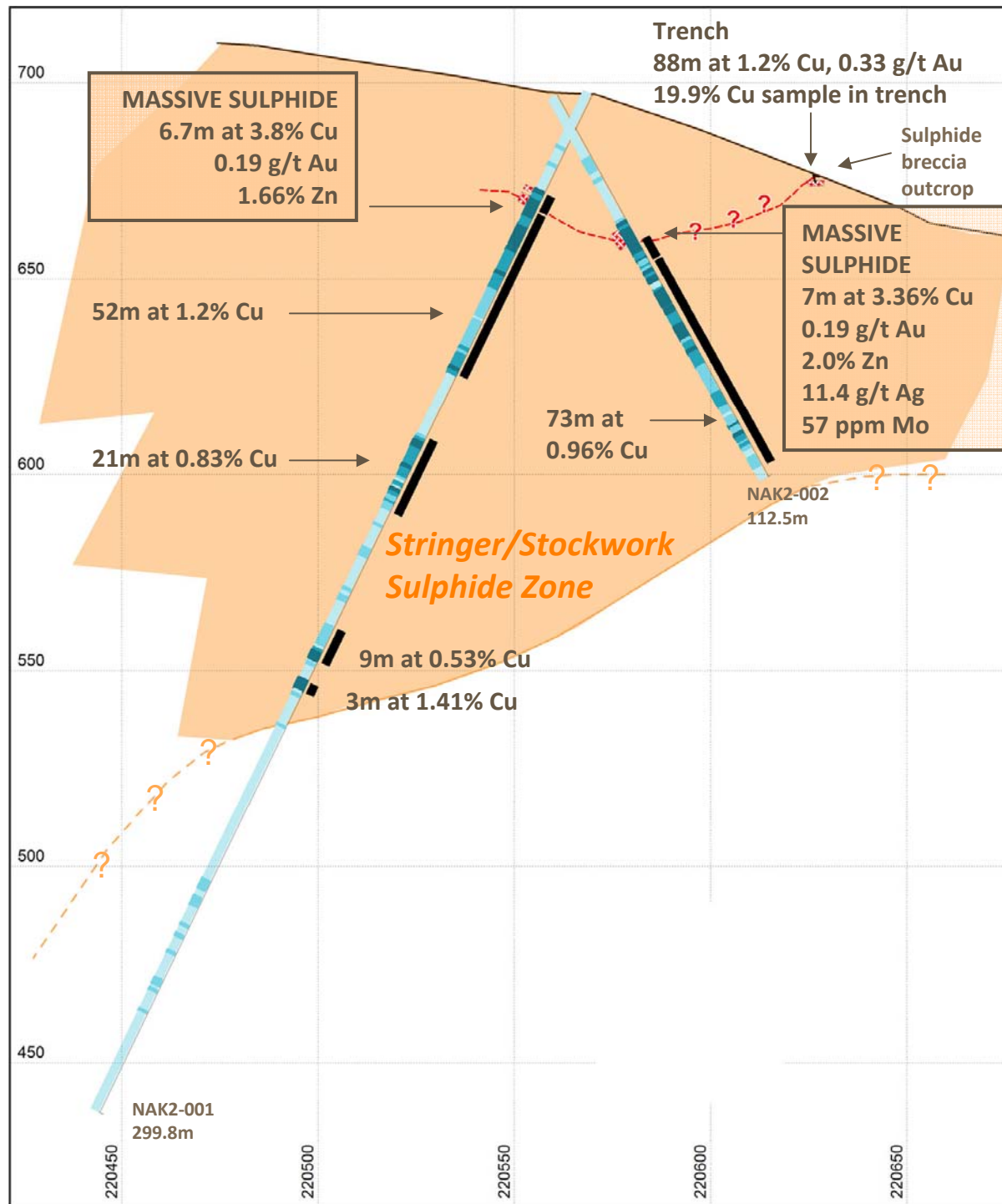


Zinc Soil Geochemistry



Nakru 2

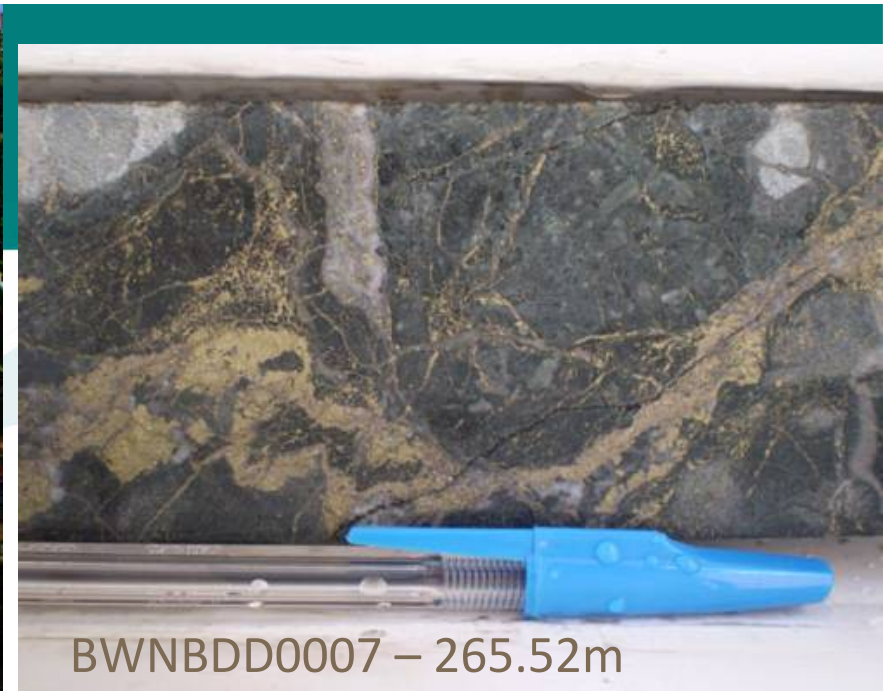
Cross-Section of Massive Sulphide Lens



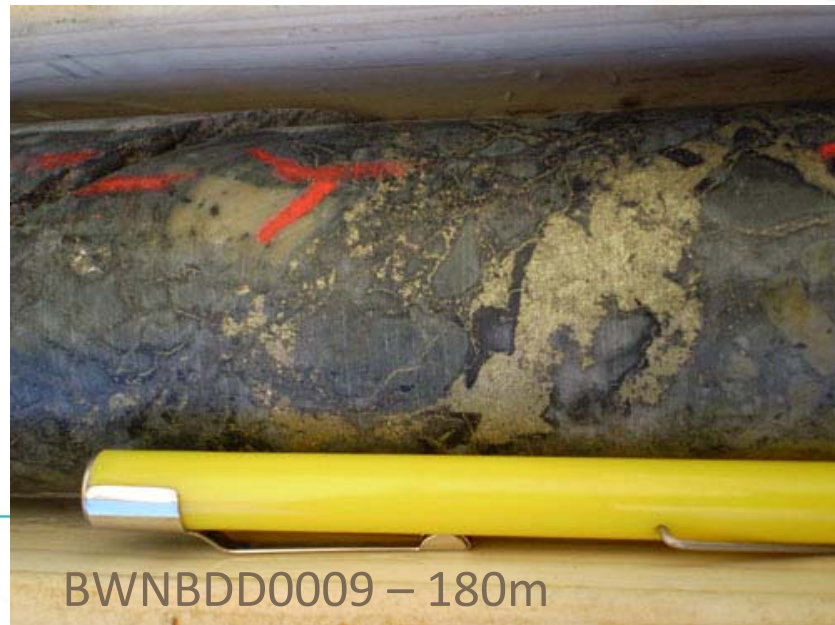
COPPERMOLY
Limited



Nakru camp



BWNBDD0007 – 265.52m

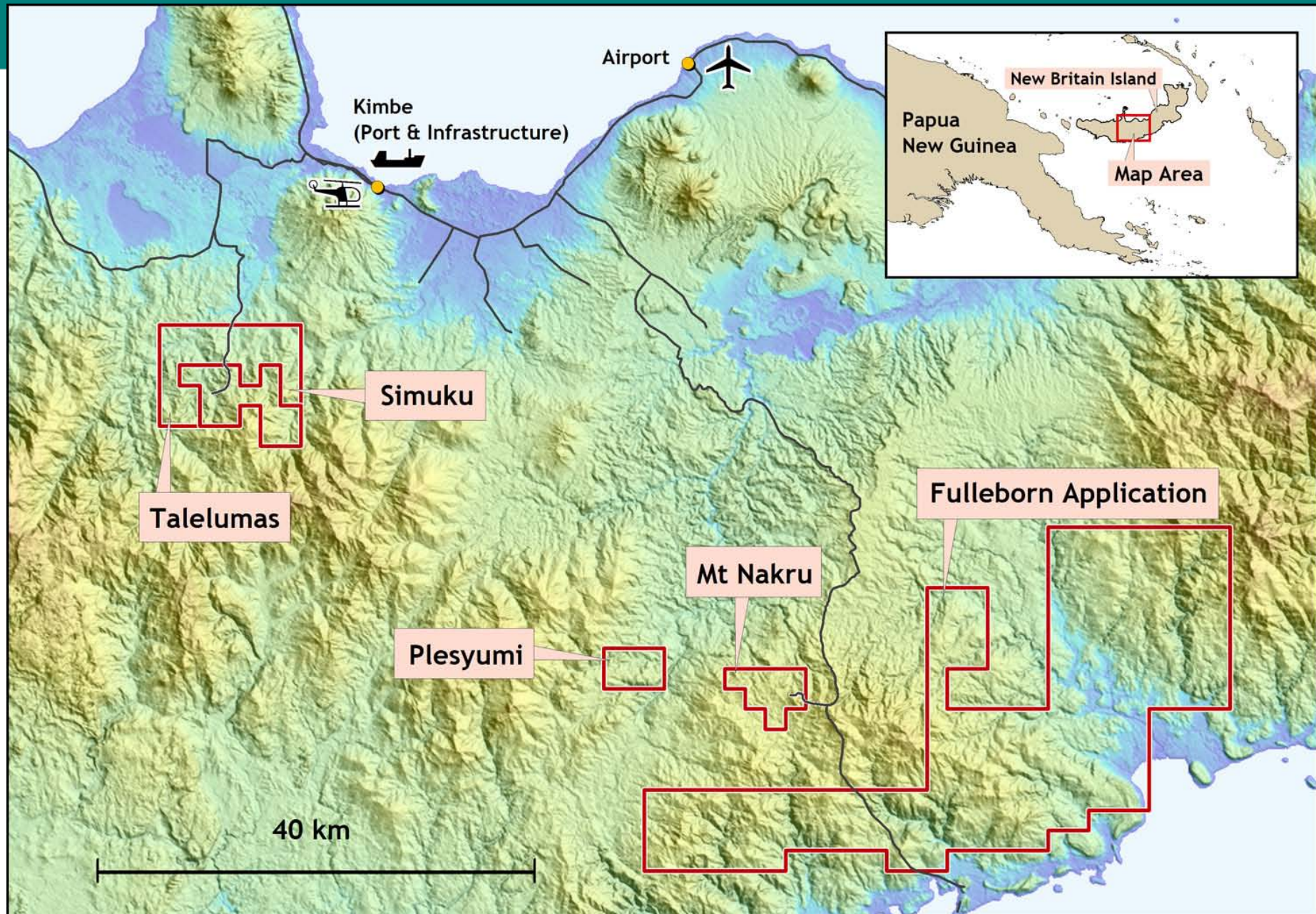


BWNBDD0009 – 180m



Drill pad BWNBDD0010

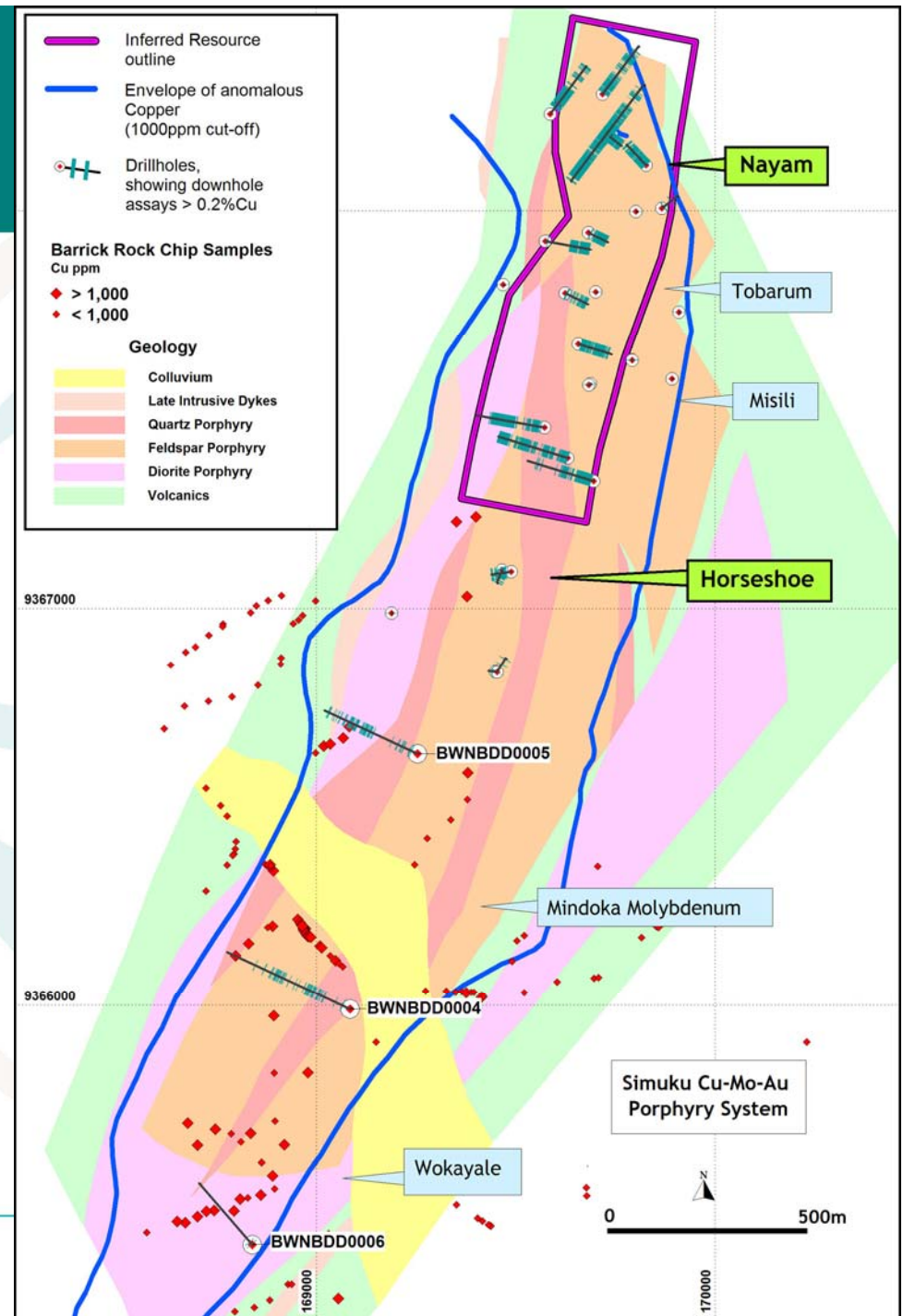
Simuku / Talelumas Project



Simuku Copper System

Simuku:

1. Maiden Inferred Resource of 200 million tonnes at 0.36% copper to be tested further by plus 600m deep drillholes in 2011
2. 20km from deep water port
3. Track/road access
4. 300m above sea level



Drilling To Test Higher Grade Zones at Depth

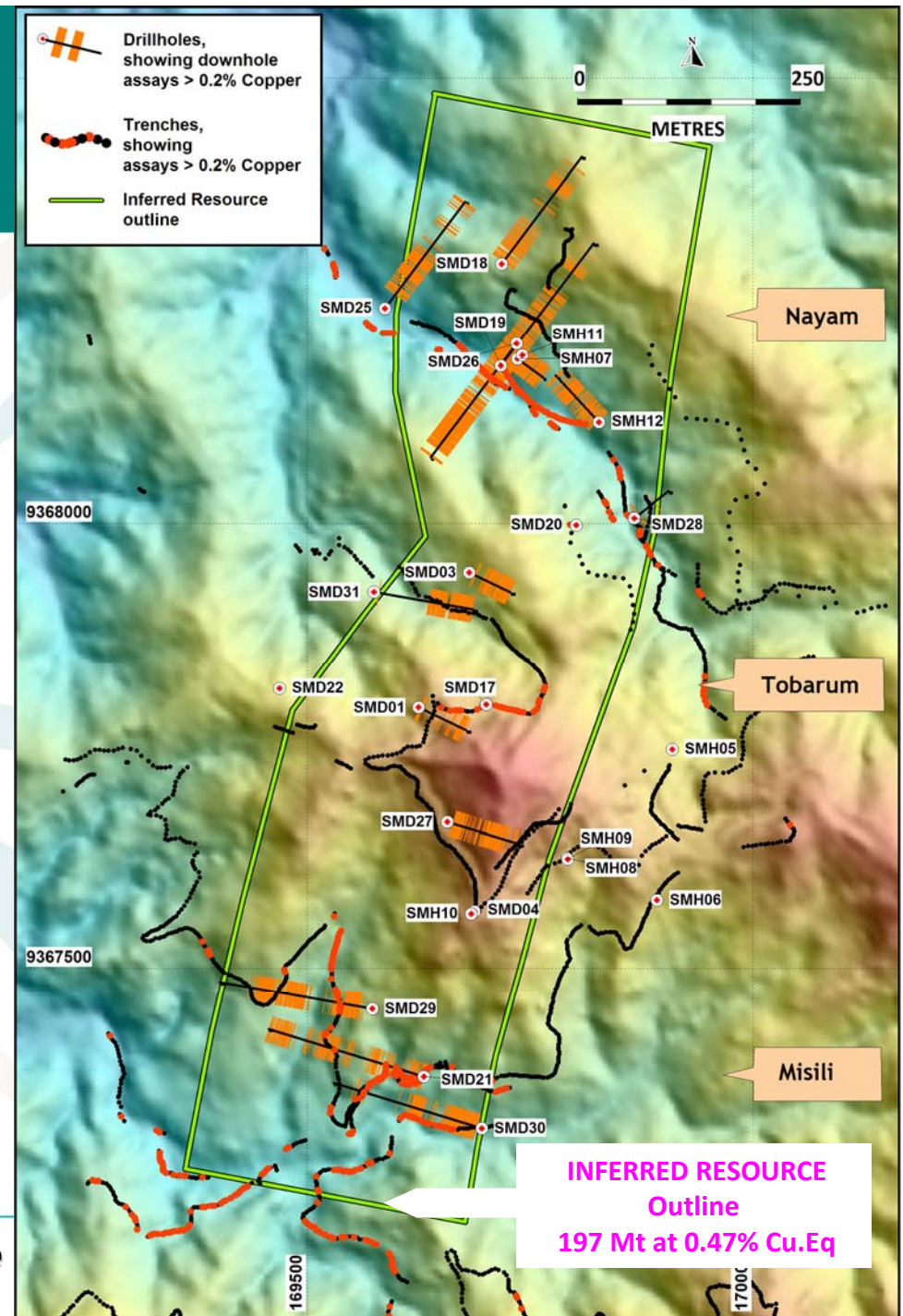
Nayam Prospect

- SMD26 intersected 282m at 0.45% Copper from 18m depth
- SMD19 intersected 93m at 0.59% Cu from 8m depth Including 18m of 1.0% Cu from 18m depth

Tobarum Prospect

- SMD10 intersected 58m at 0.53% Cu at 24m depth

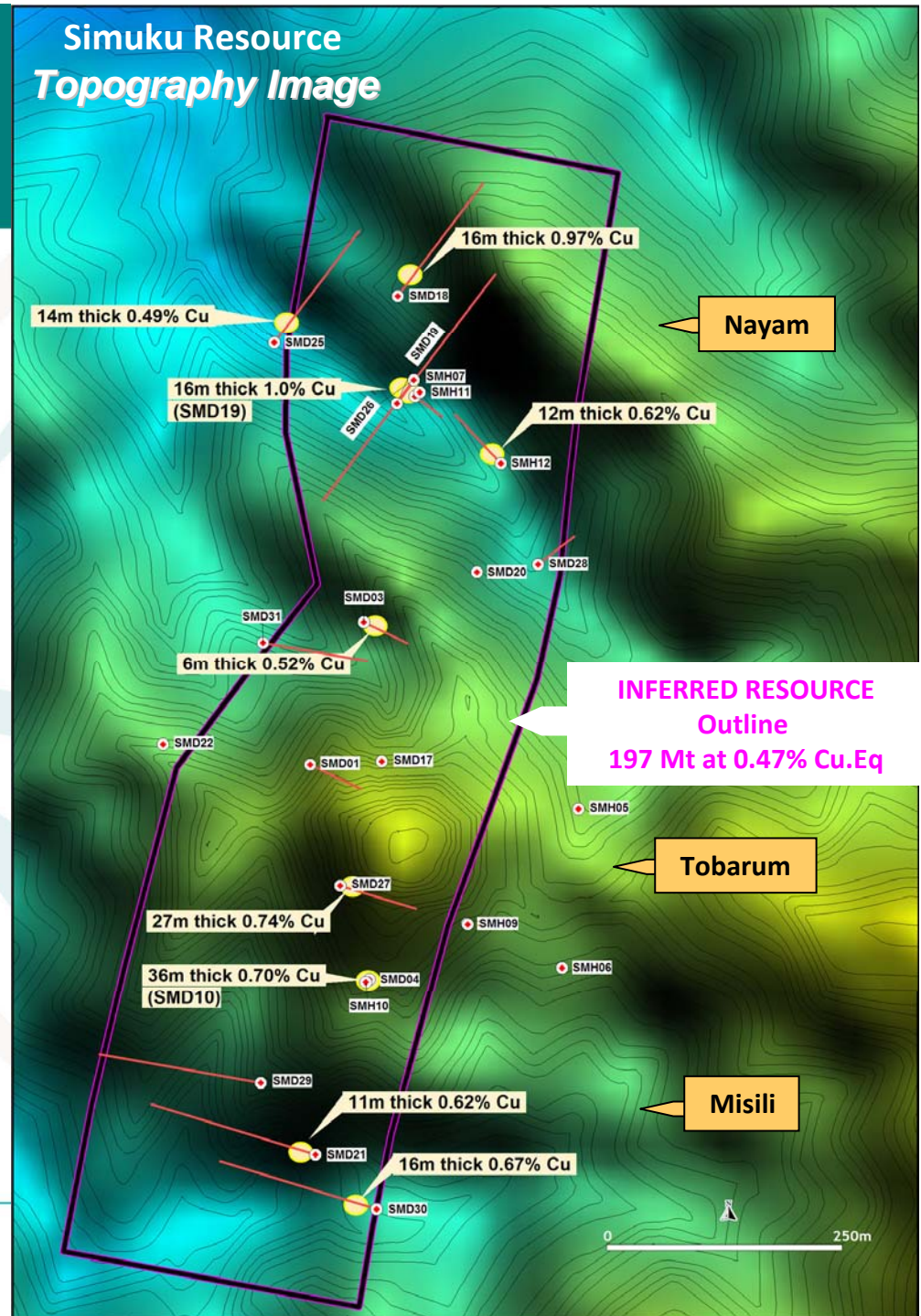
Topography Image



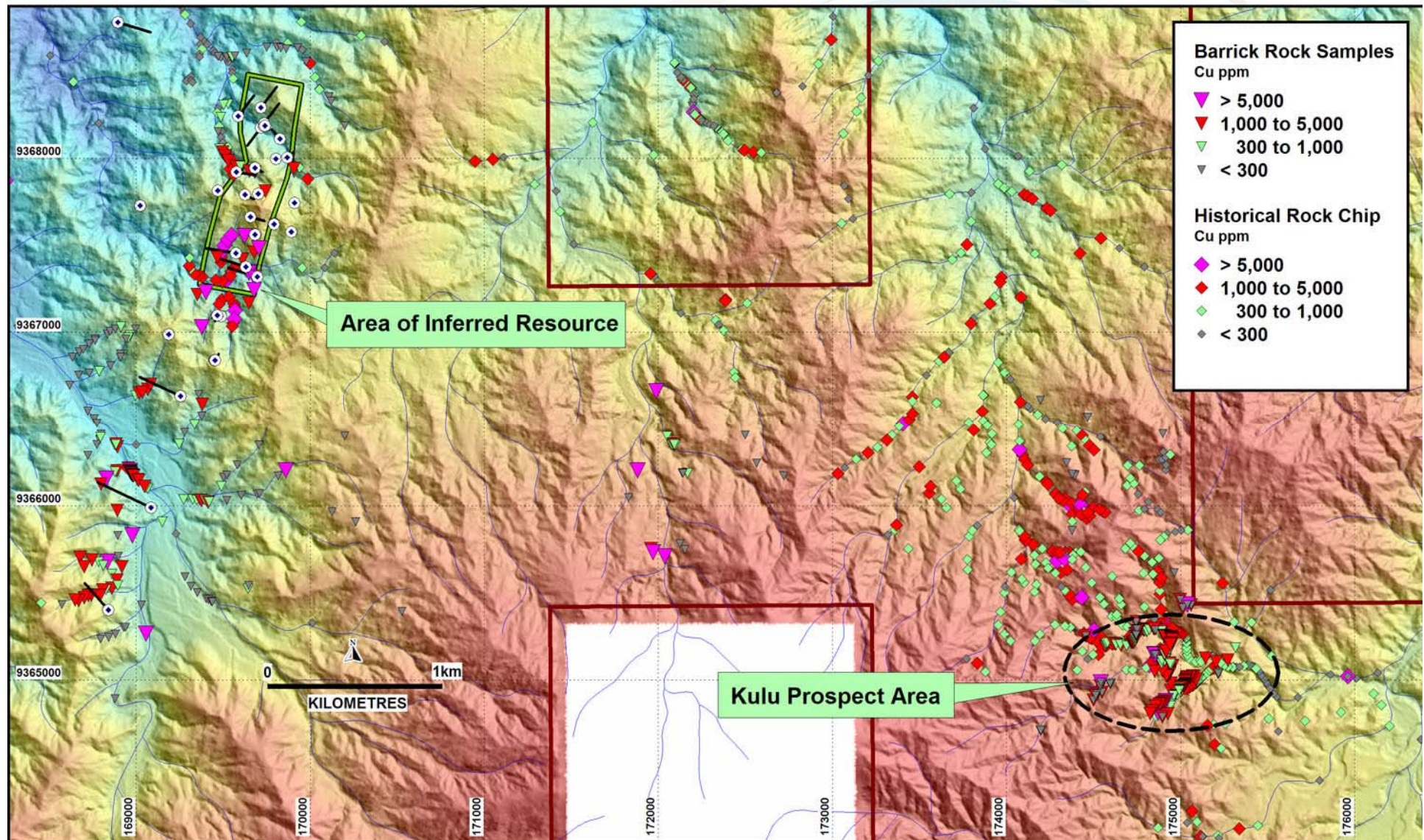
Near Surface Copper Enrichment

Secondary Copper Enrichment within the Resource area in the top 60 metres

- Tobarum : 27m thick at 0.74% copper
- Nayam: 16m thick at 1.0% copper



Simuku and Regional Kulu Copper and Gold Prospects Being explored by Barrick



Board and Management with PNG Experience

Dal Brynelsen – *Non Executive Chairman*, CEO of Vangold Resources Ltd (TSX), founding Director of Griffin Mining. Over 30 years experience in the mining industry.

Peter Swiridiuk – *Managing Director*, 20 years experience copper and gold exploration in South Pacific, South East Asia, Middle East, Mexico, Cyprus and Australia.

Maurice Gannon – *Executive Director and Company Secretary*, BSc, GAICD, FCIS, AFAIM, MAusIMM, 21 years experience in earth sciences, business and financial management.

Bob McNeil – *Non Executive Director*, 50 years experience in mining and exploration.

Ces Iewago – *Non Executive Director*. BACOM, MBA, FAICD, expertise in PNG banking and finance. Chairman of NGG (TSX). Political and Mining connections in PNG.

On-Site PNG Administration and Base of Operations at Kimbe on New Britain Island.

Denis O'Neill – Geological Consultant, over 36 years experience in mining and exploration.



COPPERMOLY
Limited

Why invest in Coppermoly?

- Further drilling and exploration programme underway throughout 2011 by Barrick.
- Higher grade copper areas within Simuku Inferred Resources area to be drill tested at depth.
- Further drilling at Nakru-1 to test extents of mineralisation. Higher copper grade near surface.
- Significantly sized copper systems accessible by vehicle to existing infrastructure and a deep water port.



Notes:

- All stated intersections are weighted assay averages ($[\text{Sum of each total interval} \times \text{grade}] / \text{Total length of intersection}$).
- Drill core and rock samples were transported to the field camp site then to the Barrick base in the town of Kimbe. The drill core was logged, orientated and sampled between 1m and 2m intervals from core split by saw. Half core was then freighted to Intertek Services in Lae (PNG) for sample preparation. Sample preparation involved drying the samples to 105 degrees C, crushing in a jaw crusher to 95% of the sample passing < 2 mm, rifle splitting and pulverising to 95% passing < 75 microns. Analytic pulps were then shipped to Intertek Laboratory Services in Jakarta (Indonesia) for geochemical analysis. Gold was analysed by 50g Fire Assay with Atomic Absorption Spectroscopy finish (gravimetric finish for samples with gold > 5 g/t). Multi-element analysis was done by multi acid digestion (HCL, HNO₃, HClO₄/HF) ICP. Copper values greater than 0.5% were re-assayed with AAS finish. Intertek laboratories have an ISO 17025 accreditation.
- BWNBDD Series Drill Core is PQ, HQ and NQ in size with core recovery predominantly >95%.
- Drillhole co-ordinates are given in UTM Zone 56, AGD66 Datum.
- Mineralised intersections are quoted as downhole widths.

